

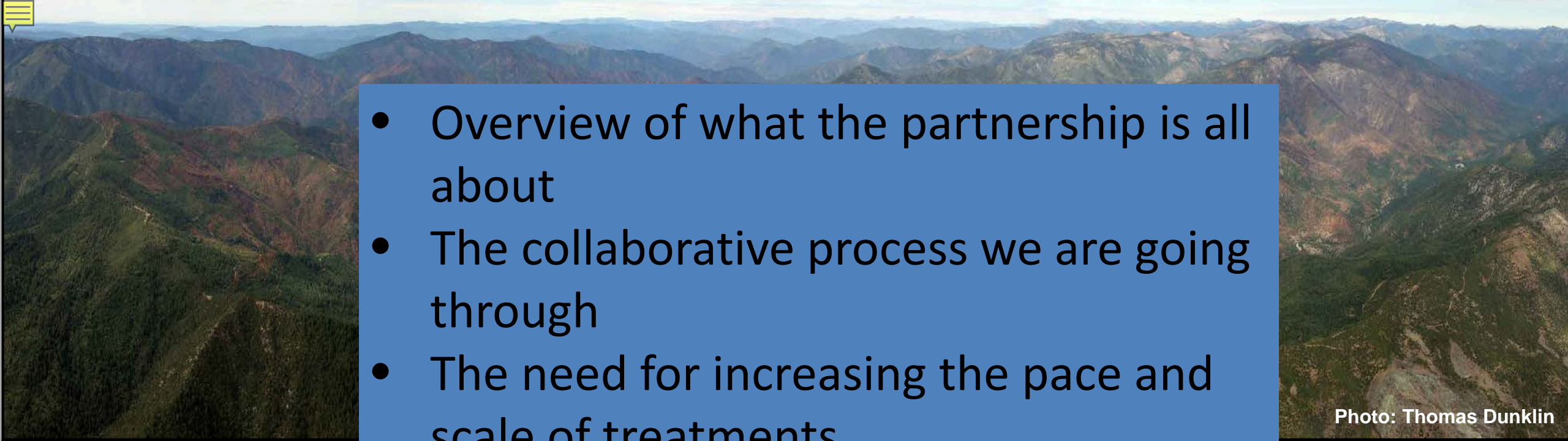
- 
- Overview of what the partnership is all about
 - The collaborative process we are going through
 - The need for increasing the pace and scale of treatments
 - What we are doing to get good fire back on the landscape

Photo: Thomas Dunklin

Bringing Good Fire E

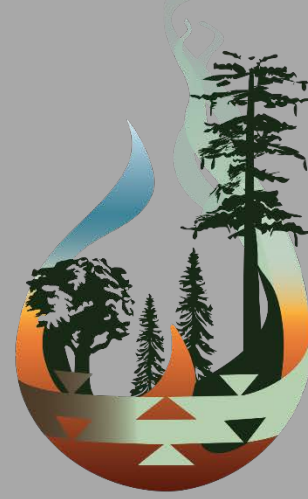
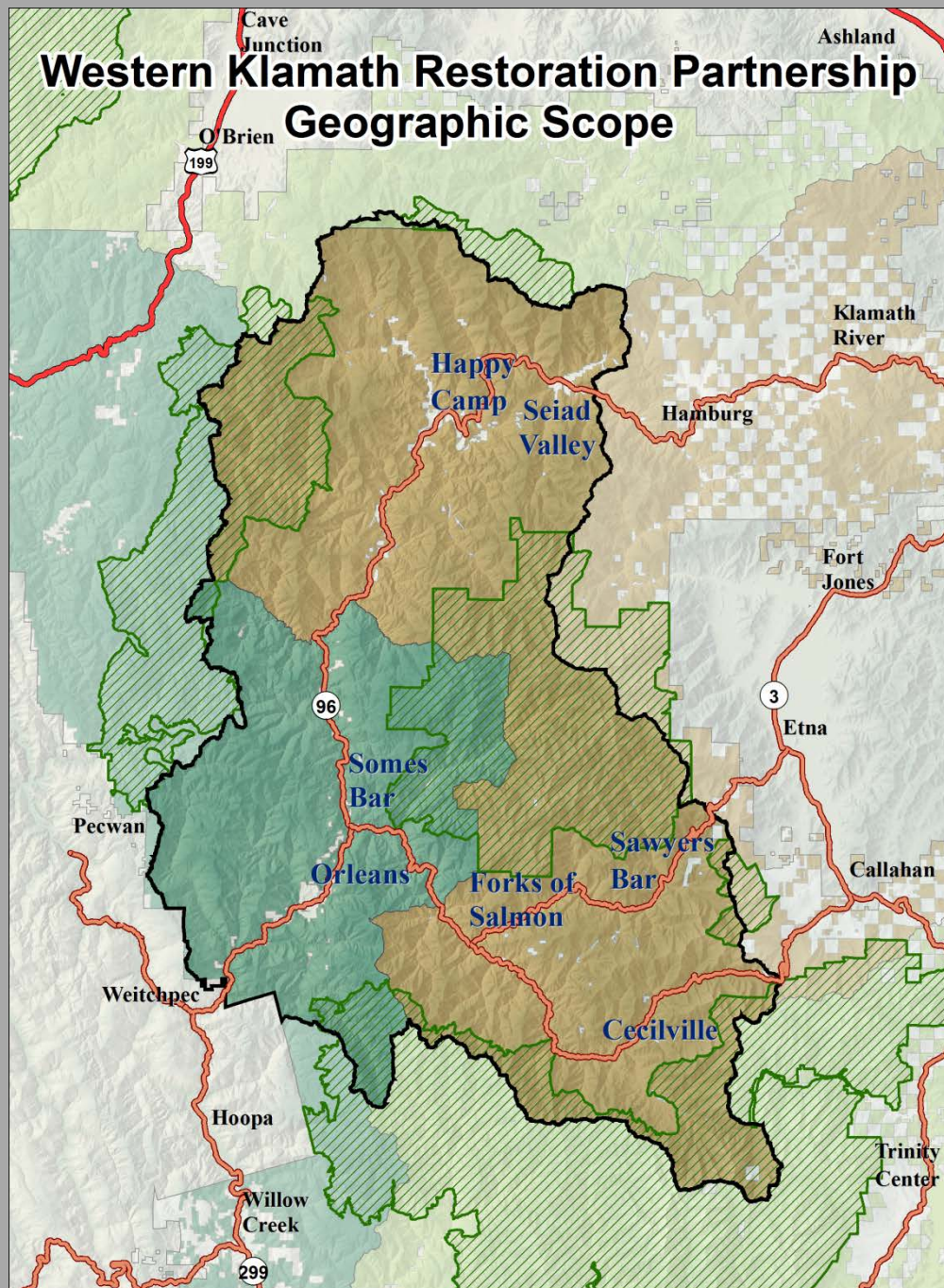
s to increase the



Clint Isbell – Fire Ecologist

USDA Forest Service: Klamath National Forest

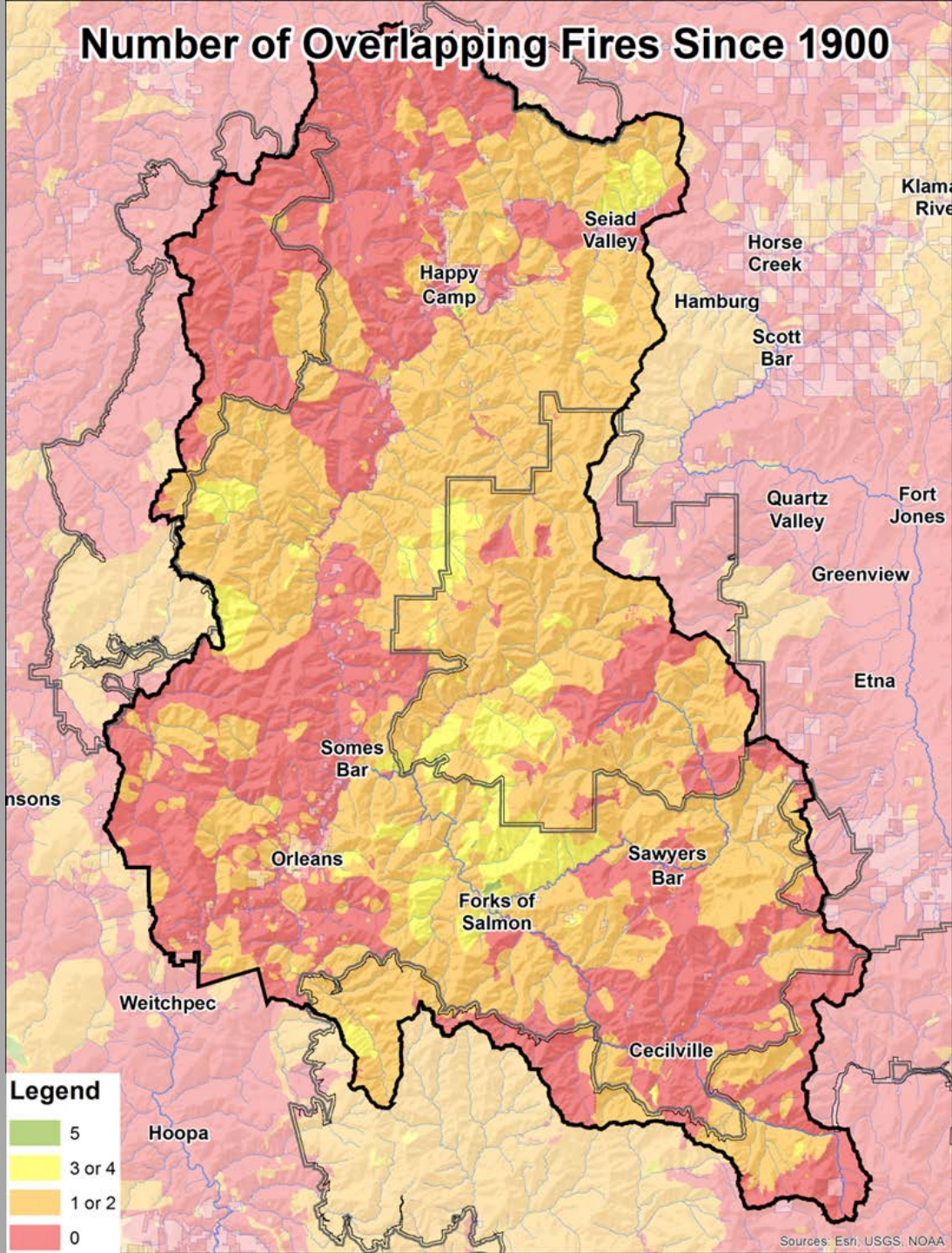
Presentation and preparation credit: Clint Isbell, Will Harling, Luna Latimer, Bill Tripp, Karuna Greenburg and WKRP Partnership



WESTERN KLAMATH RESTORATION PARTNERSHIP

- Initial meetings in 2007. Focused on instream issues.
- Began facilitated upslope restoration workshops w US FLN in Spring 2013.
- An open group comprised of Federal, Tribal, Non-governmental Organization (NGO) and local participants. FS not convener.
- Collaboratively identified planning area (1.2 million acres)
- Goal: Restore “historic” (natural w people) fire regimes in the Western Klamath Mountains.

Number of Overlapping Fires Since 1900



Grim Realities and Potential Opportunities From Fire History Analysis

- **NO areas are within their historic fire return intervals, or even remotely close.**
- **With no fire exclusion and continued native and early settler burning patterns, we would see smaller self-limiting fire footprints, and some places with 25-50 fire overlaps.**

Overlapping Fires Since 1914 in the Klamath Mountains

Number of Fires	Sum of Acres	Percent of Planning Area
0	583,971	48.8%
1	362,278	30.3%
2	75,496	14.7%
3	67,048	5.6%
4	7,339	0.6%
5	618	0.1%
Total Acres	1,196,750	100%

Sources: Esri, USGS, NOAA

English Peak Lookout -- KNF

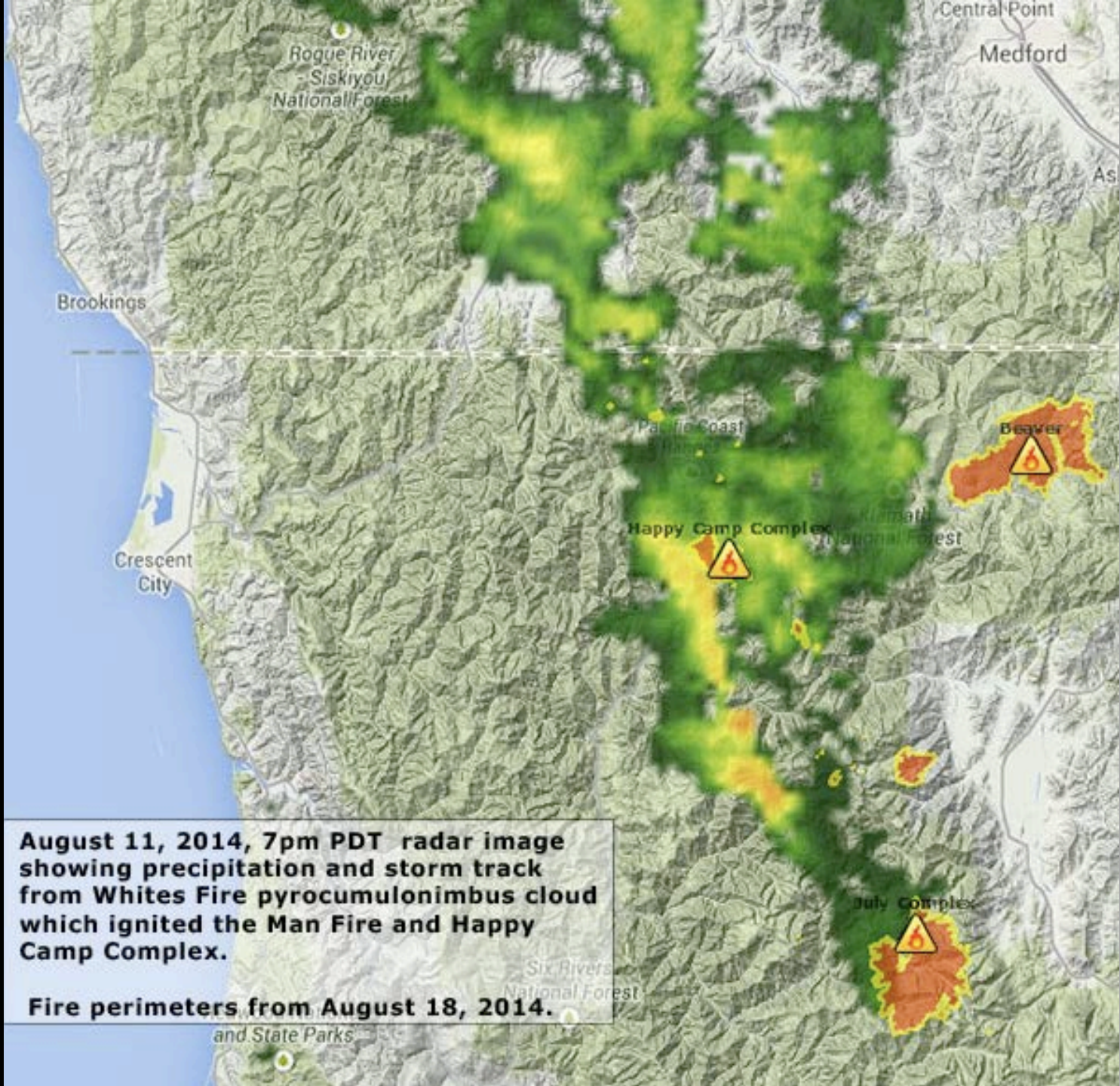


1
9
3
5



1
9
9
2

2014 Whites Fire (Re-defining Spot Fires)



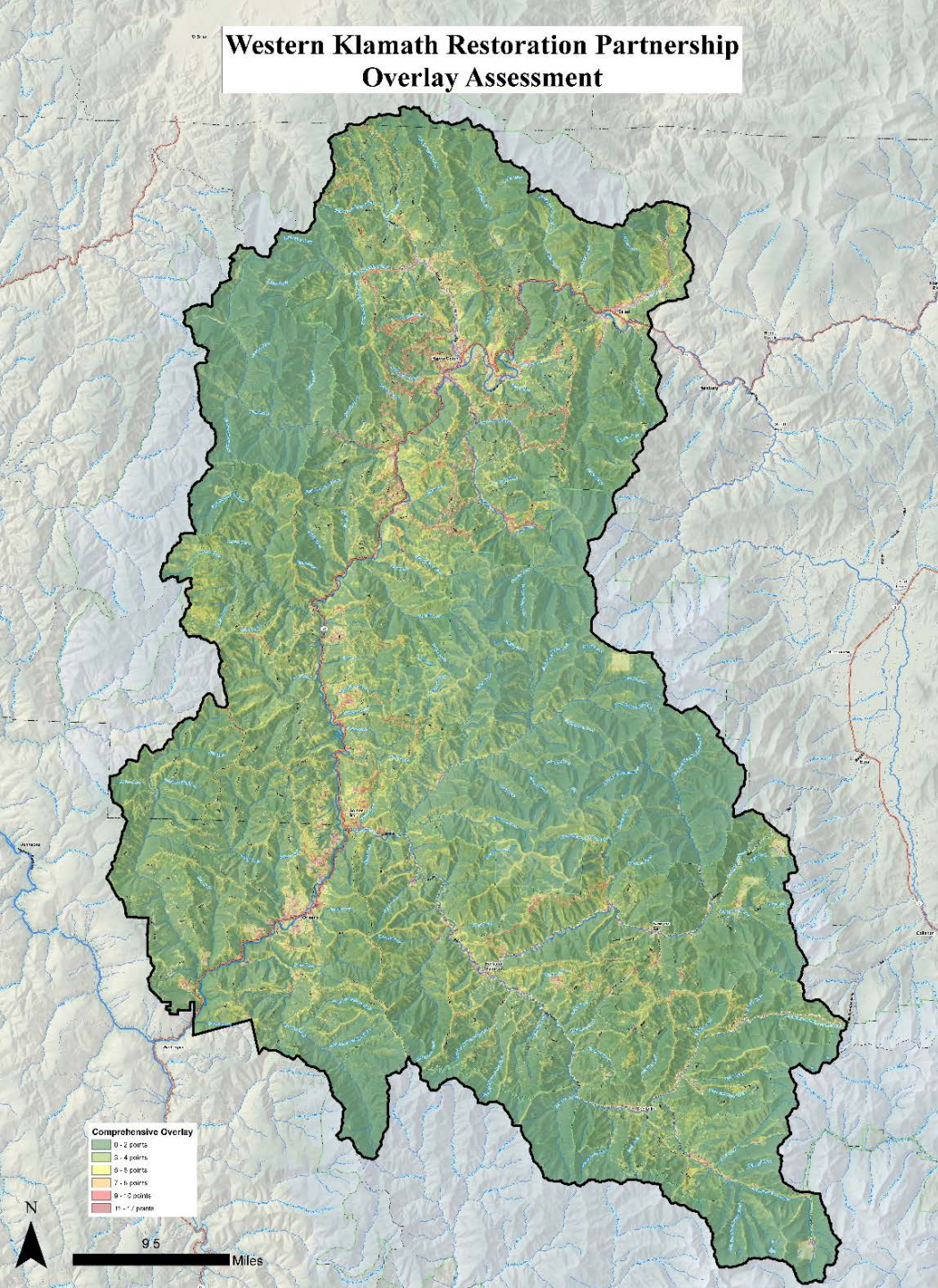
Happy Camp 2014



Happy Camp Complex 2014



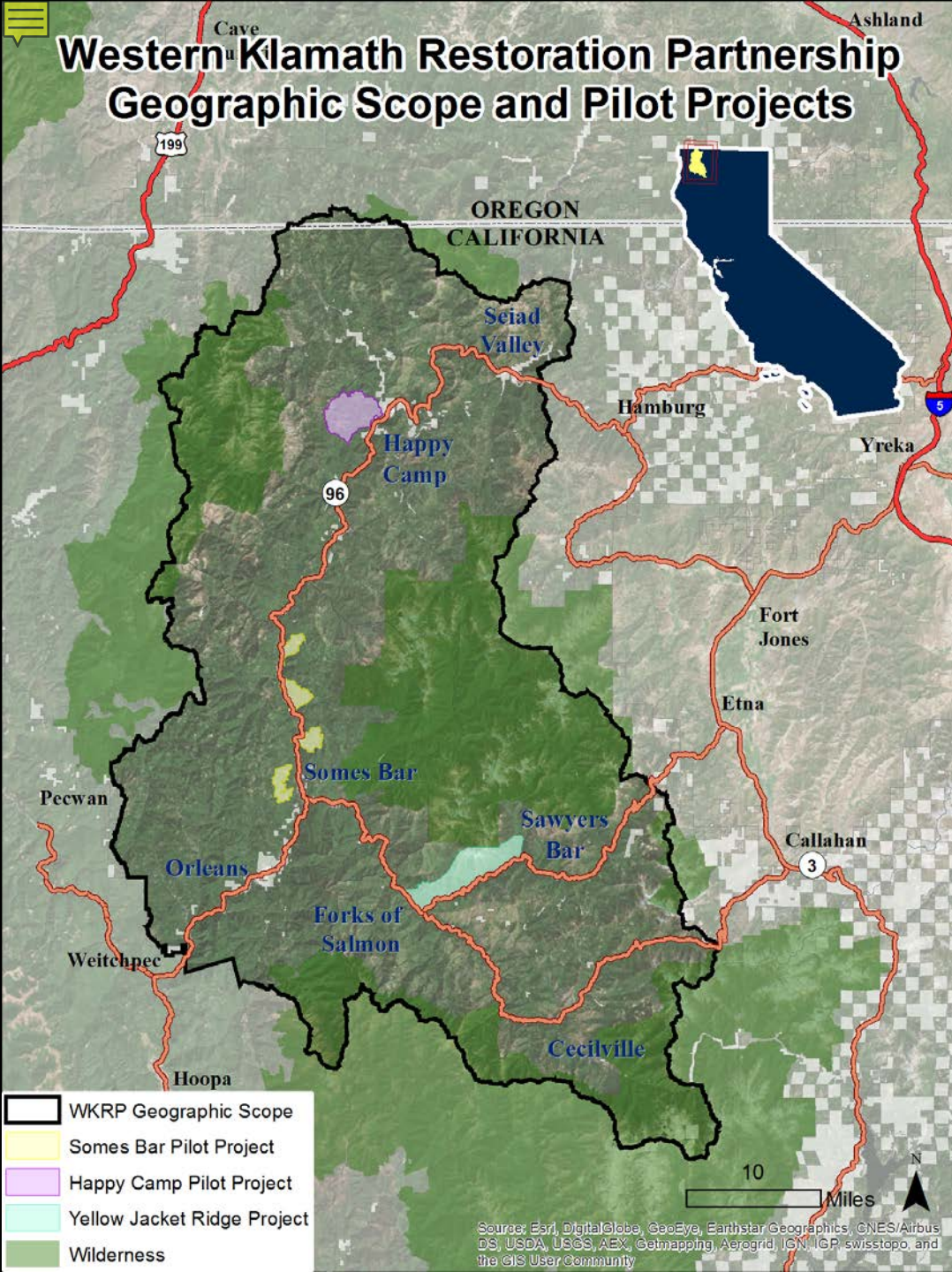
Western Klamath Restoration Partnership Overlay Assessment



Ranking Scheme for Treatment Prioritization

- **Community Wildfire Protection Plan Layers**
 - Structures Layers
 - Public/Private Property Boundary Layers
 - Critical Access/Egress Routes
 - Complete Road System (Public and Private)
 - Manual Fuels Treatments (Public and Private)
 - Upper 1/3rd Slopes
 - Existing Firelines
 - Insolation (Solar Heating) - South/Southwest Slopes
- **Karuk Eco Cultural Resource Mgmt Plan Layers**
 - Historic Trail System Layer
 - Klamath Mixed Evergreen (Tan Oak range)
 - Klamath Siskiyou Lower Montane Serpentine Woodland
 - Black Oak BpS
 - White Oak Bps
- **Silvicultural Layers**
 - Managed Stands Layer
 - Mid Mature Dense Stands Layer
 - Crown Fire Potential (97th percentile) or Flamelength (0-4', 4-8', 8+)
 - Plantations >40yrs. old
- **Wildlife Layers**
 - Spotted Owl Nest Sites Buffer
 - Elk Winter Range Restoration Potential Layer

Western Klamath Restoration Partnership Geographic Scope and Pilot Projects



Pilot Projects – Putting workshops and agreements into practice

1. Three Pilot Projects

- Bring us from agreement in principal to agreement in practice
- Focused on manual, mechanical and emphasis on getting fire back on the landscape.
- Build multi-organizational capacities
- Community based projects
- Building a local workforce
- Restoring frequent fire regimes including recent fire footprints

2. Collaborative Project Teams

- Intergovernmental Interdisciplinary Team (IID Team)
- Archaeology for Cultural Resource Benefit
- Stand Exam Crew
- Wildlife Crew
- LiDAR acquisition and field crew
- Food Grove Assessments
- Prescriptions Workgroup
- Botany Surveys
- Research and Development



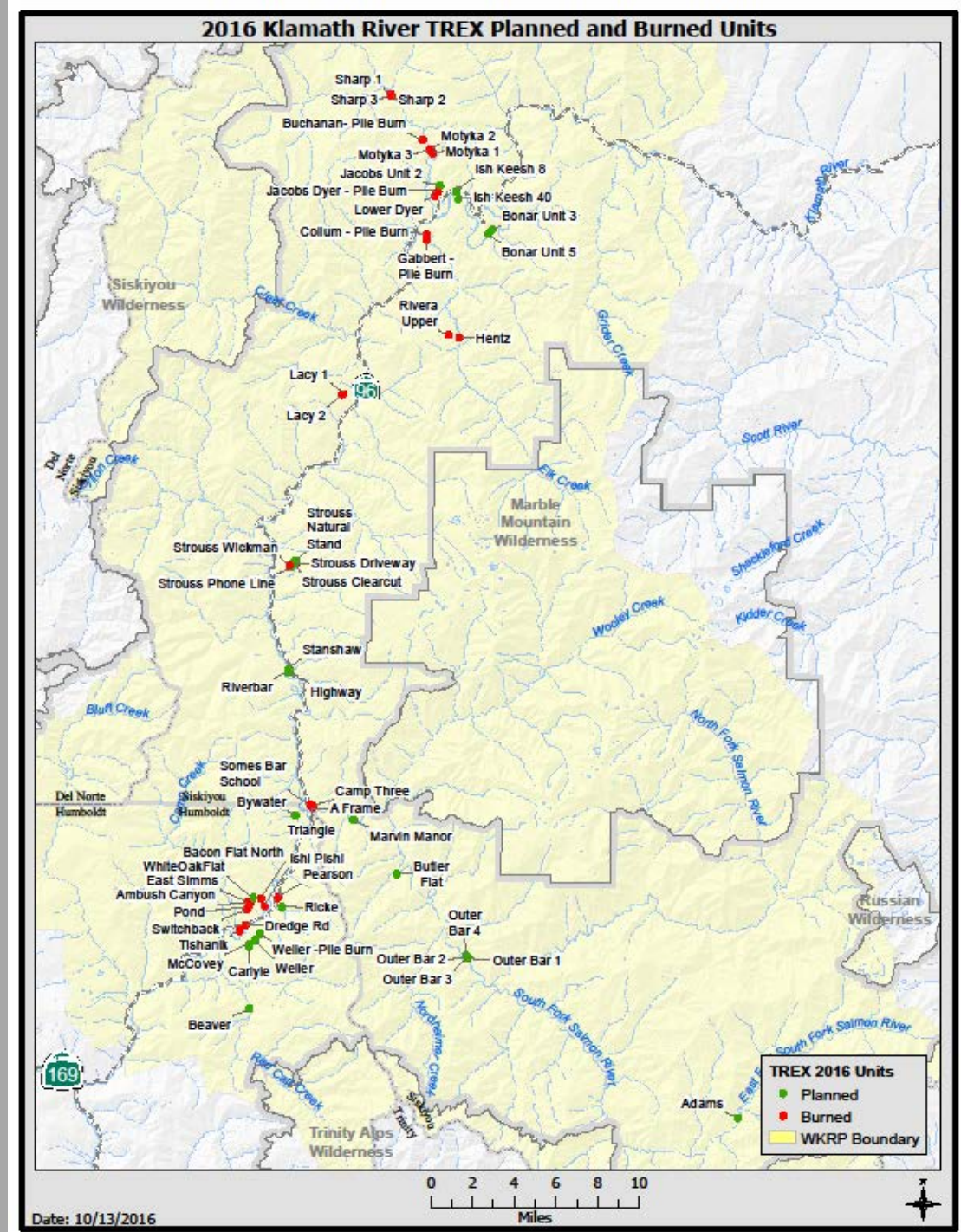
Fall 2016 Klamath River Prescribed Fire Training Exchange (TRES) SAVE THE DATE!!!

October 3rd – October 15th, 2016

ORLEANS SALMON RIVER HAPPY CAMP

Come join a diverse coalition of local, tribal, state and federal prescribed burners as we expand on last year's TRES to build a local Type III Incident Management Team that brings good fire back to the Western Klamath Mountains before the next wildfire. Call for applications will come out June 13th, 2016. Participants interested in IMT cadre or burn boss roles should engage as soon as possible.

For more information, contact:
Will Harling – (530) 627-3202 – will@mkwc.org



Implementation: TRESX 2015 and 2016



Photo: Stormy Staats



Joint Chiefs and TRESX: October 2016



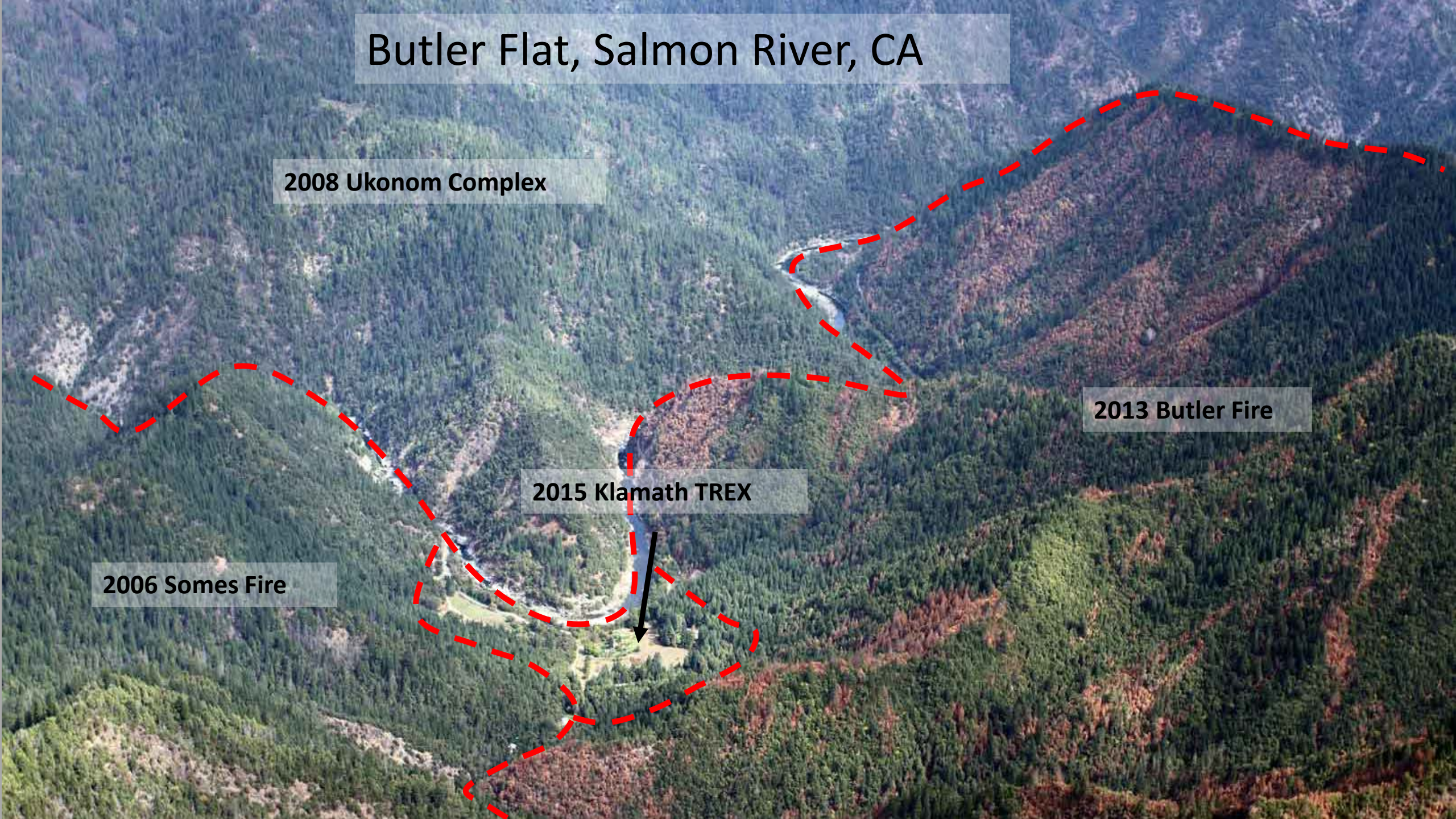
Butler Flat, Salmon River, CA

2008 Ukonom Complex

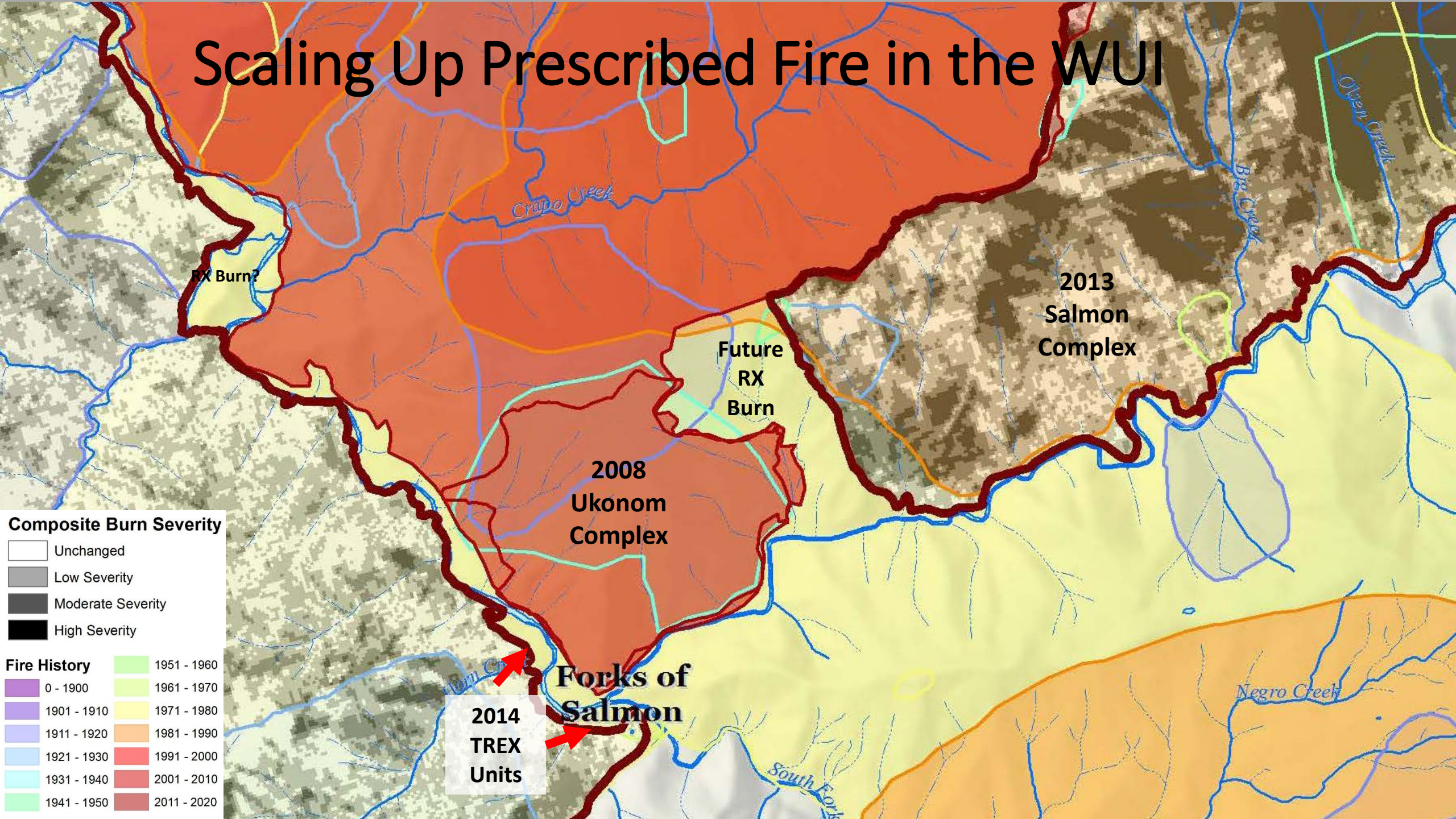
2013 Butler Fire

2015 Klamath TREX

2006 Somes Fire



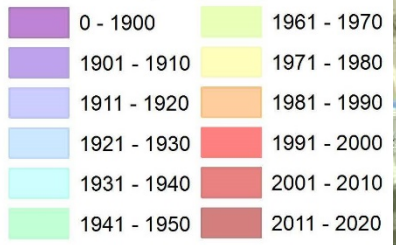
Scaling Up Prescribed Fire in the WUI



Composite Burn Severity



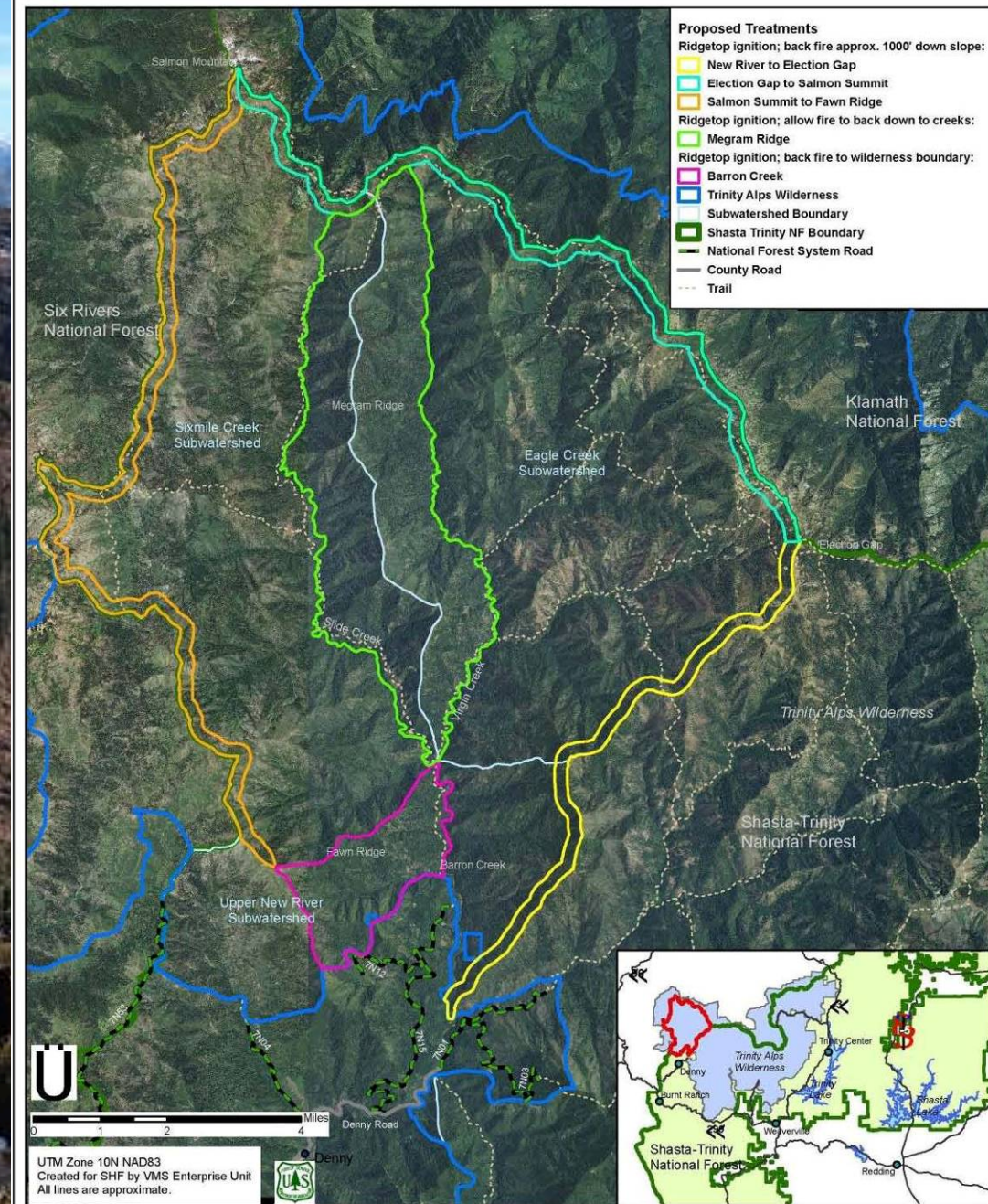
Fire History



Fire Management Strategies Outside the WUI

- Aerial (or ground based) ignitions along ridge systems in the Fall and Winter when good burn windows present themselves, both in the wilderness and NF lands.
- Could cheaply and quickly restore the function of high ridge systems as landscape level fuelbreaks.
- Similar fire management activities being discussed as we move forward.

Trinity Alps Prescribed Fire: Proposed Treatments



Challenges and Achievements

Challenges

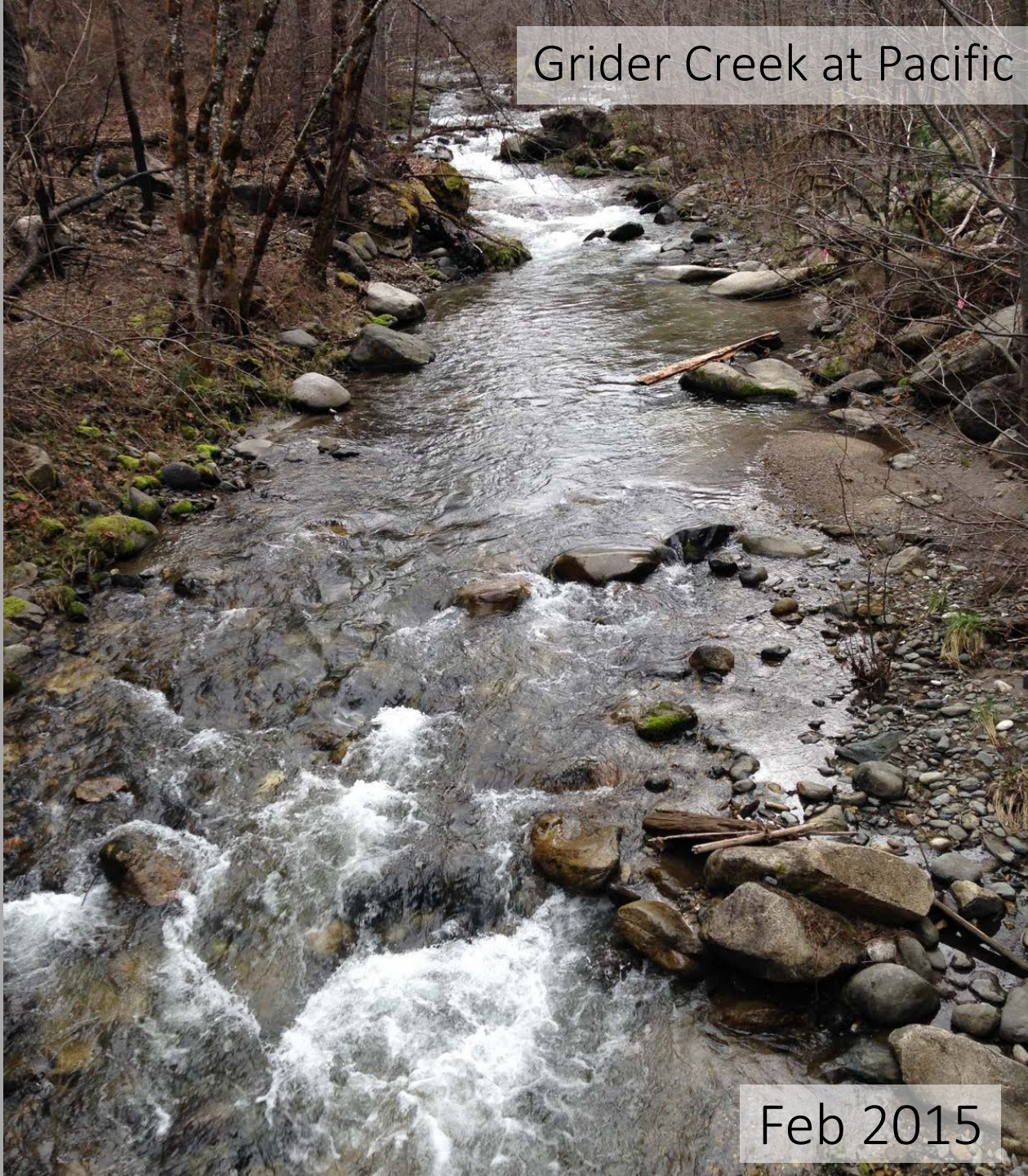
- Partnerships are tough work and take time
- Increasing pace and scale at meaningful level
- Large landscape with complex terrain

Achievements

- TREN Implementation
 - Supplemental Agreement for cross boundary burning
- Pilot Projects and support for previous NEPA
- Agreement in Principle from diverse stakeholders
- Working together on all lands approach



Grider Creek at Pacific Crest Trailhead



Feb 2015



July 2015

Photos: Mark Motyka